

Invest

in Chula Vista: Shop | Dine | Stay



CHULA VISTA
CHAMBER
OF COMMERCE

2011 membership & resource guide

There's something for everyone!

invest

in Chula Vista



Invest in Your Community

Did you know that by purchasing goods and services in local stores and businesses, you're investing in your community? A small portion of the local sales tax consumers pay goes to the City. In fact, sales tax revenue accounts for about a quarter of the general fund. Those dollars help support Chula Vista's public services, which include libraries, recreation centers, the street paving program and fire and police protection. We need to change our shopping habits to support our local businesses, and to protect our local services.

Although residents have more choices than ever before, statistics show that Chula Vista's consumers are spending less in their community than shoppers in other cities. On a per capita basis last year, Chula Vista brought in \$106 dollars in sales taxes, far below the county average of \$139. The numbers clearly indicate that local residents are doing some of their shopping somewhere else.

In partnership with the City of Chula Vista, the Chula Vista Chamber of Commerce's new "*Shop, Dine, Stay: Invest in Your Community*" campaign is designed to encourage residents to spend money in their own city. Consider this: it's easier to shop close to home; you'll save gas and spend less time on the road in traffic.

Chula Vista Center

Chula Vista Center located at the corner of Broadway and H Street in west Chula Vista features the only Sears store in the South Bay, with over 120 specialty shops and restaurants. Open Monday — Saturday, 10am — 9pm and Sunday, 10am — 8pm, Chula Vista Center has been proudly serving the South Bay area for over 45 years. Hours are extended even further during holidays and department stores and restaurants usually have alternative hours.

Chula Vista Center is proud of its service to the community. Free children's

craft events are featured monthly, while the "Hometown Heroes" program recognizes and rewards community groups and organizations that support area youth. Many of these events are held in the mall's new Macy's West Court area which has become a popular, relaxing stopping point for customers as they browse throughout the center. The center hosts a wide range of community activities including musical and dance entertainment and free school-hosted events in both the Macy's West Court and in the second level Food Court.

The EastLake Design District

San Diego County's only one stop shopping for all of your home furnishings and accessories. Lush landscape, beautifully designed fountains and ample parking make EastLake Design District the ideal place for the entire family. The District has everything you need to furnish and decorate your home in one easy location from paint, rugs, appliances and furniture; you'll find it all here.

We are home to Eastlake's own Brewhouse, featuring a premiere micro-brewery with a casual menu. The restaurant offers 260 seats, including a bar/lounge, large outside patio with 2 fire pits, 2 private dining rooms, a kid's game room, and 14 plasma televisions. The Brewhouse features 8 of their own handcrafted beers, guest beers, a full bar, and wine list. Their menu covers everything from appetizers to items from their grill, their smoker, and their earthstone pizza oven. Enjoy!

For all you sports fans and bowling enthusiasts there's the EastLake Tavern & Bowl. This 16,000 sq. ft. sports lounge has more than enough HD Flat Screens, 10 bowling lanes and plenty of room to keep the party rollin'! With an extensive menu, game room, pool tables and a fun and upbeat atmosphere, the EastLake Tavern & Bowl is fun for the whole family!

Both establishments offer nightly entertainment and are open until 2 a.m. on weekends.

shop | dine | stay

Experience the ease and convenience of shopping and dining close to home. Save gas, save time, save money — and invest in your community.



The EastLake Design District is proud to announce its newest tenant, Kid Ventures, an indoor play village and parent café. Kid Ventures is the next generation in boutique-style indoor family play centers. Their fun and stimulating indoor play village is designed to stretch your child's imagination in a healthy and safe way. For more information, visit www.eastlakedesigndistrict.com.

Otay Ranch Town Center

With more than 100 of the country's top specialty stores, Otay Ranch Town Center is the first major outdoor shopping and entertainment center in the San Diego metropolitan market in more than 20 years. For the South Bay area, it completely redefines the manner in which public gathering spaces blend with fashionable, fun stores in a variety of restaurant choices and entertainment.

Visitors can walk down urban, bustling, open-air, shop-lined sidewalks without street parking, outdoor cafes and grand fountains. A pet-friendly setting and adjacent doggie park welcome 4-legged visitors, and the centrally located "Kaiser Permanente Chalk Garden" and popper fountain for children to make this destination especially one-of-a-kind. Sophisticated "California heritage" architecture—with attention to detail—creates a place that people will revisit to play, gather, linger, shop, and be entertained.

Eclectic tastes are served by Macy's, REI, Barnes & Noble, Apple, Sephora and White House Black Market, and H&M to name just a few. On the center's east side is a specialty fashion and service village, featuring Gila Rut Aveda Salon, Coldwater Creek Spa and other unique fashions and services. To the north, AMC Otay Ranch 12 delights film buffs. Diners can choose from P.F. Chang's China Bistro, The Cheesecake Factory, Sushi-Ya, Frida Mexican Cuisining, King's Fish House and many others.

Otay Ranch Town Center is conveniently located 4 miles east of I-805 or just off the SR 125 at Olympic Parkway and EastLake Parkway. Otay Ranch Town Center is open Monday through Saturday from 10 am to 9 pm, and Sunday from 11 am to 7 pm. Hours are extended during the holiday season.

The **Otay Ranch Certified Farmer's Market** is open every Tuesday from 4-8 pm on Main Street. For additional information, visit www.otayranchtowncenter.com or call (619) 656-9100.

The Shops at San Miguel Ranch

A true hometown jewel, residents can shop for groceries at Albertson's after enjoying the relaxing atmosphere. The Shops at San Miguel Ranch's patio provides a great setting to enjoy a fresh cup of Starbucks Coffee, while overlooking Chula Vista. If you're not in the mood for coffee, enjoy one of a wide variety of restaurants. For more formal dining, visit Villa Capri Family Style Trattoria that features a complete Italian menu and full bar.

The Shops have a number of services to help families enjoy everyday life — from dry cleaning to a nail salon, banking, and more! Since opening in May 2007, The Shops at San Miguel Ranch has demonstrated their commitment to the community by donating more than \$20,000 back to local students. The center has hosted special events, bringing snow and love reindeer to Chula Vista during the holidays, and will continue to provide safe, family-friendly activities.

The Shops at San Miguel Ranch is located at the corner of Proctor Valley Road (East H Street) and Mount Miguel Road in Chula Vista.

Westfield Shoppingtown Plaza Bonita

This is the South Bay's only enclosed, climate controlled shopping center here you'll find more than 120 stores. In addition, the center features more than 20 eateries, such as Outback Steakhouse, Applebee's and Pat & Oscar's. When you visit Westfield Shoppingtown Plaza Bonita, you'll enjoy a unique shopping experience from the moment you arrive until the moment you leave. Just ask a shopping concierge about new, enhanced services, such as complimentary signature gift boxes, package carryout and expectant mother parking. Furthermore, amenities such as the Family Lounge and the Westfield Playtown are the perfect compliment to shopping.

Westfield Shoppingtown Plaza Bonita is open Monday through Saturday from 10 am to 9 pm and Sunday from 11 am to 7 pm. Department store and holiday hours may vary. You can find them at I-805 at Sweetwater or Bonita Road, or Highway 54 at Plaza Bonita Center Way. For additional information, contact the Shopping Concierge Center at (619) 267-2850.

Places to Shop

Chula Vista provides a wide selection of shopping opportunities throughout the city.

Shopping Centers

Movie theaters, dining and fast food, department stores, clothing stores, specialty shops, book stores, salons and more!

Chula Vista Center
555 Broadway • (619) 427-6700
www.chulavistacenter.com

Otay Ranch Town Center
2015 Birch Road • (619) 656-9100
www.otayranchtowncenter.com

Shopping Plazas

Dining and fast food, specialty shops, groceries and more!

Bonita Point Plaza
Otay Lakes Rd & East H St

The Marketplace at Windingwalk
EastLake Pkwy and Birch Rd

Canyon Plaza
Telegraph Canyon Rd & Halecrest Dr

Shops at San Miguel Ranch
Proctor Valley Rd

Chula Vista Crossings
I-805 and Main St

South Bay Marketplace
Highway 54 and Fourth Ave

EastLake Design District
Otay Lakes Rd & Fenton Pkwy

Terra Nova Plaza
I-805 and East H Street

EastLake Terraces
Olympic Pkwy and EastLake Pkwy

Village Walk at EastLake
EastLake Pkwy and Miller Dr

EastLake Village Center
Otay Lakes Rd and EastLake Pkwy

Specialty Shopping

Dining and fast food, specialty shops, hobby stores and more!

EastLake Village Marketplace
Otay Lakes Rd & EastLake Pkwy

Palomar Trolley Center
Broadway and Palomar (SWC)

Heritage Town Center
East Palomar and Santa Rita

Spotlight on Broadway
760 Broadway, between J and K

Naples Center
Naples St and Third Ave

Third Avenue Village
Third Ave between E and H Streets

Palomar Square
Palomar and Broadway (NWC)



Home Improvement/Décor

Home improvement, home décor, dining and more!

Chula Vista Crossings
I-805 and Main St

EastLake Village Marketplace
Otay Lakes Rd and EastLake Pkwy

EastLake Design District
Otay Lakes Rd & Fenton Pkwy

Rancho Del Rey Power Center
East H St and Paseo Del Rey

EastLake Terraces
Olympic Pkwy and EastLake Pkwy

Autos/Dealerships

The Chula Vista Auto Park is located at the intersection of I-805 and Auto Park Drive in Chula Vista. Currently it occupies over 40 acres and houses:

Toyota Scion of Chula Vista
Fuller Ford Honda KIA
South Bay Motorsports

Fuller Ford Honda KIA is among the county's oldest retailers, currently employing over 200 people and are dedicated to the quality sales and maintenance of Ford, Honda and KIA products. Fuller offers a full array of automotive services including new and used vehicle sales and leasing, parts, and a service and body department. You can find more information on Thinkfuller.com.

Since 1946, Fuller has played an active part in the South County, winning numerous awards and maintaining a high profile in countless local events and organizations. When it's time to take care of any of your automotive needs, think Fuller and the Chula Vista Auto Park.

Toyota Chula Vista, has over eight acres of new and pre-owned vehicles. The "next level" is about providing an experience comfortable enough to recommend to family and friends.

Toyota is proud to operate in the South Bay. Their donations benefit

local schools and charities. Toyota Chula Vista sponsors the San Ysidro High School's Baseball Fields, The Toyota Family Literacy Program, South Bay Meals on Wheels, and the San Diego Chapter of Scion Evolution just to name a few.

Farmer's Markets

Chula Vista's **Third Avenue Farmer's Market** is certified and South County's original farmer's market! Purchase fresh vegetables, fruits, flowers and plants directly from local farmers every Thursday from 3-7pm. The Third Avenue Farmer's Market also features a wide variety of delicious international cuisine and handcrafted items.

The **Otay Ranch Certified Farmer's Market** boasts an incredible community of family farms that make this market a local Tuesday tradition for all. Come every Tuesday, 4-8pm on Main Street. Enjoy a market that's easy to get to, with plenty of parking, and

the freshest produce of the season grown by local farmers.

Grocery Stores

Bonita Point Plaza
Otay Lakes Road & East H Street

Naples Center
Naples Street & Third Avenue

Canyon Plaza
Telegraph Canyon Rd & Halecrest Dr

Palomar Trolley Center
Broadway and Palomar (SWC)

EastLake Village Center
Otay Lakes Road & EastLake Pkwy

Terra Nova Plaza
I-805 and East H Street

The Marketplace at Windingwalk
EastLake Pkwy and Birch Rd

Village Walk at EastLake
EastLake Pkwy and Miller Drive



Windingwalk
EastLake Parkway & Birch Road

Drug Stores

Bonita Point Plaza
Otay Lakes Rd & East H St
(NWC)

EastLake Village Center
Otay Lakes Road & EastLake
Pkwy

Broadway
Broadway & I Street (NWC)

The Plaza at Sunbow
E Palomar St & Medical Center Dr

Canyon Plaza
Telegraph Canyon Rd &
Halecrest Dr

Terra Nova Plaza
I-805 and East H Street

Chula Vista Center
Broadway & H Street

Third Avenue
Third Ave & Naples St (SEC)

EastLake Terraces
Olympic Pkwy and EastLake Pkwy

Places to Dine

From a romantic dinner to a quick bite; from decadent desserts to fresh salads; from creamy coffees to fine wines...they're all here.

Bayfront Area

Galley at the Marina
550 Marina Pkwy

El Torito
271 Bay Blvd

South Bay Fish & Grill
570 Marina Pkwy

Broadway

Butcher Shop Restaurant
556 Broadway

Joe & Ernie's Pizzeria
730 Broadway

Carrows Restaurant
598 H Street

El Patio Restaurant
410 Broadway

Mariscos Hector's Restaurant
1177 Broadway

Family House of Pancakes
562 Broadway

Zorba's Greek Restaurant
100 Broadway

IHOP
1206 Broadway

Centercut Steak & Mexican Grill
534 Broadway

Canyon Plaza

Italy Express
Nuyo Frozen Yogurt
Mandarin Canton
Pho Hiep & Grill

Chula Vista Center

BJ's Restaurant & Brewhouse
Panera Bread
Jamba Juice
Shakey's Pizza Parlor
Olive Garden

Chula Vista Crossings

Souplantation
Panda Express

E Street

Aunt Emma's
700 E Street

La Quinta Grill & Cantina
625 E Street

Black Angus
707 E Street

Los Arcos
89 Bonita Road

EastLake Design District

Brew House at EastLake
Vega Cafe
EastLake Tavern + Bowl

EastLake Terraces

Nuyo Frozen Yogurt
Pick Up Stix

EastLake Village Center

Alejandro's
Sam's Smokin' BBQ

IHOP
Totally Toppings (Yogurt)

EastLake Village Marketplace

Bento & Noodles
Jamba Juice
Daphne's Greek Cafe
Miguel's Cocina
Islands Restaurant
Panda Express

Otay Ranch Town Center

California Pizza Kitchen
Panda Express
Cheesecake Factory
Panera Bread
Chili's
P.F. Chang's China Bistro
Frida Mexican Cuisine
Romano's Macaroni Grill
King's Fish House
Sushiya
Nico's Steak and Chop House
La Parroquia Cafe & Music Lounge



The Plaza at Sunbow

Lolita's Taco Shop

Shops at San Miguel Ranch

Figaro's Pizza
Los Primos Mexican Food
Great Steak & Potato Co.
Surf City Squeeze
Villa Capri
Kyoto Sushi

Terra Nova Plaza

Bento & Noodles
Daphne's Greek Cafe
Cafe Tazza
D'Lish
China China
Robek's Fruit Smoothies

Third Avenue

California Sushi Bar
337 Third Avenue

La Bella's Pizza Garden
373 Third Avenue

Chico's Bakery
216 Third Avenue

Mangia Italiano On Third
248 Third Avenue

China Little Cafe Express
492 Third Avenue

Marie Callender's
330 F Street

Country Waffles
303 H Street, #15

Domino's Pizza
382 Third Avenue

Mea Kwan Thai Cuisine
230 Third Avenue

Don Pedro Taco Shop
247 Third Avenue, #8

Downtown Plaza Deli
290 Third Avenue

Quizno's Classic Subs
303 H Street #109

D'Volada Cafe & Smoothies
320 Third Avenue

Red Lobster
342 F Street

El Comal Mexican Restaurant
262 Third Avenue

The Soup Stone
310 Third Avenue #B-4

Fuddruckers
340 Third Avenue

Jimmy's by the Park
333 Third Avenue

Tacos El Poblano
217 Third Avenue

Talavera Azul by La Espadana
365 Third Avenue

L&L Hawaiian Barbecue
333 H Street, #1025

La Bella Cafe & Games
289 G Street

Teriyaki Grill
380 Third Avenue

Village Walk

Brigantine
Pat & Oscar's
The Broken Yolk
Sushiman
Golden Spoon Frozen Yogurt
Via Lago Trattoria
Los Primos

Windingwalk

Achiote Mexican Restaurant
Tutti Frutti Frozen Yogurt
Oggi's Pizza and Brewer
In-N-Out Burger

Other Areas Around Town

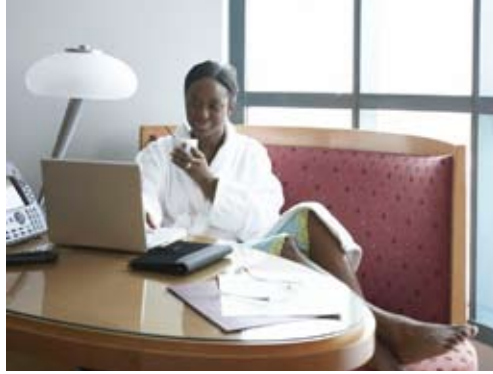
Ciao Italian Restaurant
4360 Main Street, Suite 212

Hometown Buffet
651 Palomar Street

Chili's Bar & Grill
800 Paseo Del Rey

Lolita's Taco Shop
409 Telegraph Canyon Road





Places to Stay

In town on business or need a place to stay for guests? Chula Vista's comfortable hotels and motels will make the visit enjoyable!

Bay Breeze Inn & Suites

692 H Street • (619) 425-3862

Highway Inn

70 Broadway • (619) 665-3679

Bay Cities Motel

864 Broadway • (619) 420-2951

Best Western Plus Otay Valley Hotel

4450 Main Street • (619) 422-2600
Visit Website

Best Choice Inn

778 Broadway • (619) 476-9555

La Quinta Inn

150 Bonita Road • (619) 691-1211
Visit Website

Best Western, Chula Vista

946 Broadway • (619) 691-6868
Visit Website

Motel 6

745 E Street • (619) 422-4200

Best Western, South Bay

710 Broadway • (619) 420-5183

Palomar Inn

801 Palomar St. • (619) 423-8889
Visit Website

Big 7 Motel

333 Broadway • (619) 422-9278

Palomar Motel

1160 Walnut Ave. • (619) 575-2944

Comfort Inn & Suites

632 E Street • (619) 426-2500
Visit Website

Ramada Inn San Diego South

91 Bonita Road • (619) 425-9999
Visit Website

Days Inn

699 E Street • (619) 585-1999
Visit Website

Riviera Motel

372 Broadway • (619) 488-1266

El Primero Boutique Hotel

416 3rd Ave • (619) 425-4486
Visit Website

Travel Inn

394 Broadway • (619) 420-6600

Good Nite Inn

225 Bay Blvd. • (619) 425-8200
Visit Website

Travelodge Suites

235 Woodlawn Ave. • (619) 876-2313
Visit Website

Harbor View Motel

1089 Broadway • (619) 422-2967

Vagabond Inns

230 Broadway • (619) 422-8305
Visit Website

Visit the Nature Center!

The Chula Vista Nature Center is a living, breathing, flapping, buzzing and splashing home to the unique animals and plants of Southern California. Six miles south of downtown San Diego, the Nature Center sits on the 316-acre Sweetwater Marsh National Wildlife Refuge.

Open Daily
10 am - 5 pm



CHULA VISTA
NATURE
CENTER



For the past half-century,
we've built what matters most. **Trust.**



Life is filled with priceless, one-of-a-kind moments. We've never forgotten home is the place where your precious memories last forever. At McMillin, nothing matters more than creating homes families cherish, in neighborhoods they love. And that's a proud tradition we continue to build upon every day.



McMillin Communities

CHULA VISTA

TERRACOTTA
at McMillin Lomas Verdes
Charming Courtyard
Homes with Backyards
1,577 to 2,010 sq. ft.
3 to 5 Bedrooms
866-811-0045
by McMillin Homes

JACARANDA
at McMillin Lomas Verdes
Single-Family Homes
1,935 to 2,447 sq. ft.
3 to 4 Bedrooms
619-794-1703
by McMillin Communities

INDIGO
at McMillin Lomas Verdes
Single-Family Homes
Coming Spring 2011
2,503 to 2,808 sq. ft.
3 to 4 Bedrooms
by McMillin Communities

VERONA
at Rolling Hills Ranch
Estate-Sized Lots
Coming Summer 2011
3,534 to 4,691 sq. ft.
3 to 6 Bedrooms
by McMillin Communities

MILLENNIA
New Urban-Style Living
Join our interest list at
milleniasd.com

MORNING VIEW
2,300 to 3,330 sq. ft.
3 to 7 Bedrooms
619-794-1708
by McMillin Communities

VA/FHA FINANCING
mcmillincommunities.com



Prices subject to change. Models shown do not reflect any ethnic/racial preference. DRE #01848944

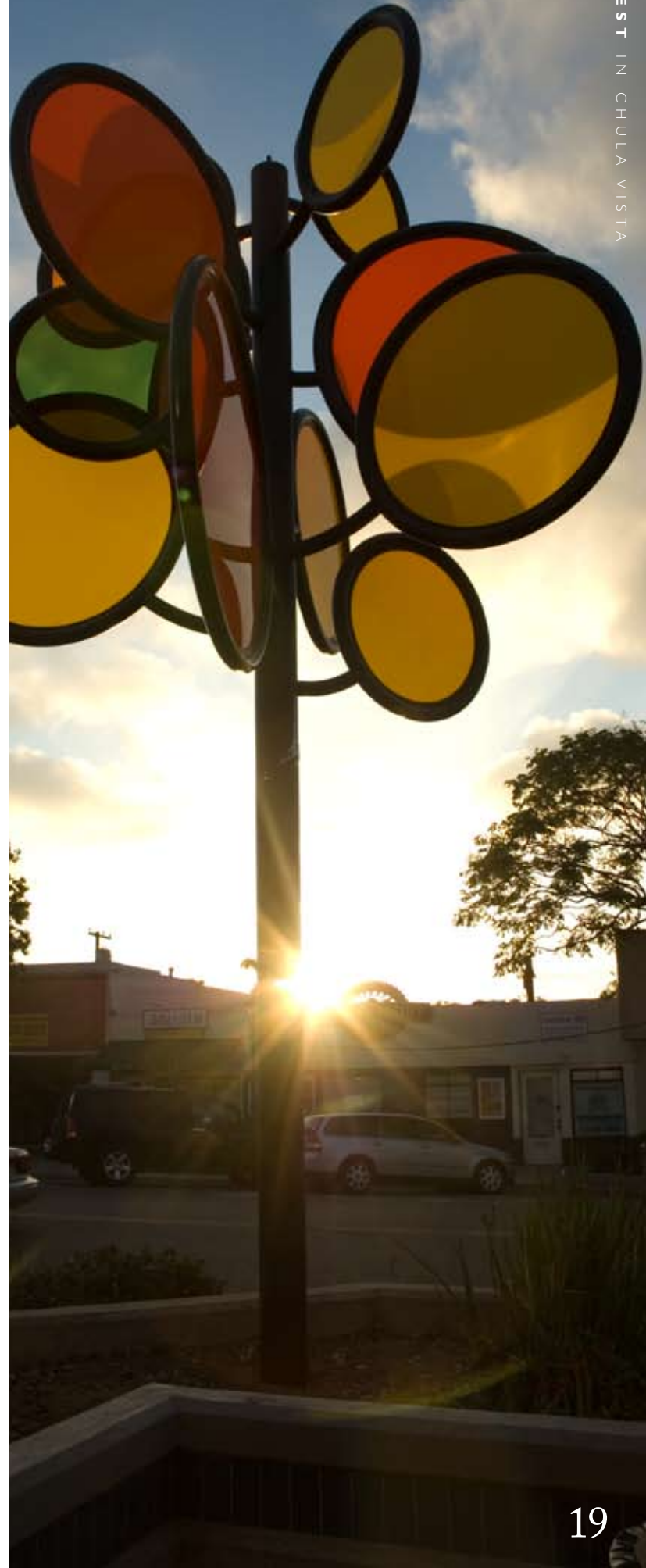
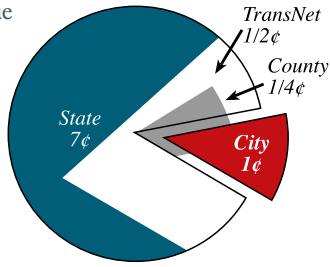


Follow us on
Facebook and Twitter.



Invest in Your Community

One cent of the 8.75¢ sales tax revenue (of every dollar spent) stays locally to support the services we all cherish and depend on: public safety (police and fire), street maintenance, beautiful parks, public libraries, recreation and more! By spending your hard-earned money in Chula Vista, you're helping your community.



Service you can trust!

- 30 years experience
- Evening appointments available
- Se habla español

Tax Services



Specializing in personal and business tax returns, tax planning, back tax filings, accounting services and payroll certification



619.585.7595 | 378 E Street, Chula Vista | bob@rjbliss.com



FOR ALL YOUR DAILY NEEDS

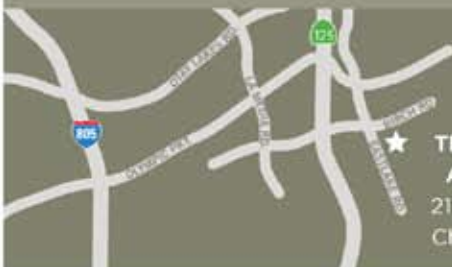
THE MARKETPLACE AT WINDINGWALK

Finally, a convenient place for local residents to shop, dine, and conduct the daily business of life. Do your banking, buy your groceries, take your clothes to the cleaners, grab lunch or dinner—whatever you have on your To Do list, you can do it here.

Vons Grocery • Wells Fargo • Bank of America
Otay Ranch Eyeworks • In-N-Out Burger
Achiote Mexican Restaurant • Windingwalk Cleaners
Oggi's Pizza & Brewing Company • Tutti Frutti
Frozen Yogurt • El Michoacano Taco Shop
Grandmaster Wynn School of Taekwondo
Serene Hair & Nails • Pediatrics In Paradise

Retail Leasing Info: 858.526.6650

Shea Properties.
RETAIL



★ THE MARKETPLACE
AT WINDINGWALK
2110-2160 Birch Road
Chula Vista, CA 91915



Things to Do & Attractions

Chula Vista offers a wide array of attractions and activities to entertain all year.

Attractions

Chula Vista Nature Center

The Nature Center is alive! It's a living, breathing, flapping, buzzing and splashing home to the unique animals and plants of Southern California. Six miles south of downtown San Diego, the Nature Center sits on the 316-acre Sweetwater Marsh National Wildlife Refuge.

The Nature Center aquariums are home to Moray eels, Leopard sharks, stingrays, guitarfish and other marine life found in San Diego Bay. Rescued birds thrive at exhibits like Raptor Row and Eagle Mesa. Owls, pelicans, gnatcatchers and eagles are just a few of our resident native birds.

The Chula Vista Nature Center is a 501(c)3 organization dedicated to providing environmental education on coastal resource conservation, and instilling a respect for nature and wildlife in people of all ages. They do this by providing interactive wildlife learning experiences. Curators and volunteer docents introduce guests to the way our native creatures live in their natural habitats.

For over 20 years, the Chula Vista Nature Center has hosted thousands of school children every year for field trips, science classes, scout events and other kid-friendly opportunities.



Harbor/Marina

Chula Vista's scenic harbor offers spectacular views and easy access to southern San Diego Bay. The harbor includes two marinas, an RV park, and several restaurants. It is also home to Chula Vista Yacht Club and two waterfront parks. Various sport fishing, sight-seeing

and whale-watching charters operate out of Chula Vista Harbor.

Through the Endangered Species Breeding & Release Program, the Nature Center partners with the U.S. Fish and Wildlife Service, SeaWorld, San Diego Zoo's Wild Animal Park, and independent biologists to captive - breed and release one of California's most endangered water birds - the Light-footed Clapper Rail. Open every day.

1000 Gunpowder Point Drive (at the west end of E Street). (619) 409-5900

www.chulavistanaturecenter.org

Cricket Wireless Amphitheatre

Cricket Wireless Amphitheatre is an outdoor performing arts theater with reserved seating for 10,000 and additional seating for 10,000 on an attractively landscaped lawn. The amphitheatre is located just 17 minutes from downtown San Diego in Chula Vista.

The Amphitheatre holds the title as San Diego County's first large entertainment venue designed exclusively for the performing arts. This world-class event locale is perfect for large scale, yet intimate events. Set in an exceptional international location, one mile from the border of Mexico and the United States, this concert showcase features amenities in an environment that offers the best entertainment experience possible for the concert fan. Open year-round. 2050 Entertainment Circle (off Auto Park Drive) (619) 671-3600

Marina and RV Park, 550 Marina Parkway (619) 691-1860, www.chulavistamarina.com or www.chulavistarv.com

California Yacht Marina, 640 Marina Parkway (619) 422-2595, www.cymchulavista.com



Knotts Soak City USA

San Diego County's wildest water adventure park! Thirty-two water-logged acres packed with 22 of the most intense water rides imaginable -- all themed to the surf woodies and longboards of the 1950s San Diego coast! Open May through September

2052 Entertainment Circle (off Auto Park Drive) (619) 661-7373

U.S. Olympic Training Center

An official U.S. Olympic Committee training facility dedicated to the development of America's current and future Olympic athletes participating in nine sports including archery, rowing, canoe/kayak, soccer, softball, field hockey, tennis, track and field, and cycling. See athletes training, take a free guided tour of the facilities and shop at the Olympic Spirit Store. Open year-round.

2800 Olympic Parkway (619) 656-1500

OnStage Playhouse

Downtown Chula Vista's only live community theatre with an up-close, intimate setting. The theater seats 60 playgoers, and produces six or more plays per year. If you're looking to pursue your acting career (or you want to have fun), you may even choose to audition!

291 Third Avenue (619) 422-RSVP [7787]



Otay Valley Regional Park

The Otay Valley Regional Park (OVRP) is a multi-jurisdictional park that runs through Chula Vista. There are trails for hikers, bikers and equestrians. Those with a passion for angling will find peaceful fishing holes along the trails throughout the OVRP. Discover native plants and animals, and enjoy the great outdoors! *OVRP Ranger Station, 2155 Beyer Boulevard (619) 424-0463*



Golf Courses

Salt Creek Golf Course

This serene course brings traditional links style golf to Southern California's natural terrain. Set on the gradual slopes of Mount Miguel, protected as state wildlife reserve, Salt Creek offers five sets of tees and generous fairways that deliver a demanding, yet exceptionally playable golf course, measuring 6,889 yards from the back tees and 5,505 from the forward tees. For further information or tee times, please call! *525 Hunte Parkway, (619) 482-4666*

EastLake Country Club

Located in Chula Vista's EastLake community, this is an 18-hole championship golf course,

which offers semi-private memberships, as well as daily fee play. Complete with a lighted practice facility, fully stocked pro shop, indoor grill, and outdoor event pavilion, EastLake Country Club is the premier golf and special event destination for South Bay, San Diego, and more. For more information on memberships and golf tournaments, or to schedule a tee time, please call or visit www.eastlakecountryclub.com. *2375 Clubhouse Drive, (619) 482-5757*

Chula Vista Municipal Golf Course

An 18-hole championship course with pro shop,

putting and chipping greens, driving range, carts, snack bar, clubhouse, and restaurant. *4475 Bonita Road, Bonita (619) 479-4141*

Bonita Golf Club

Located in the serene Bonita Valley, Bonita Golf Club offers a par 71 golf course measuring 6,287 yards. This mature, well-conditioned layout provides a variety of challenges to both the experienced and weekend golfers at an affordable price. The fully staffed banquet room can accommodate up to 250 guests; one of the largest in the South Bay area. It's ideal for wedding receptions and business seminars.

San Diego Country Club

88 L Street
(619) 422-8895
Private Club - Members Only

Movie Theaters

AMC Theaters Otay Ranch 12
2015 Birch Road

Regal Rancho Del Rey 16
1025 Tierra Del Rey

UltraStar Chula Vista 10
555 Broadway #2050



619.651.8033

www.photobyelsa.com

- Realtor & Business Headshots
- Commercial Photography
- Branding
- Marketing



US Olympians begin here.

You'd think that with the warm California weather, only athletes who participate in the summer Olympic Games enjoy the benefits of the US Olympic Training Center in Chula Vista.

Think again.

Athletes from bobsled, skiing, skeleton, and luge have all made their rounds to the facility in Chula Vista for strength and conditioning training, rehabilitation and fitness testing.



Annual Events Around Town

Third Avenue Village Association

For additional information about the following events or specific dates, please contact (619) 422-1982 or visit www.thirdavenuevillage.com

Cinco de Mayo Festival

This annual festival is usually on the first Sunday of May. This flagship Third Avenue event includes live entertainment on four stages, authentic food from Mexico and around the world, local crafters and contests. Come join the 30,000 community members who enjoy the festival each year.

Lemon Festival

Celebrate summer at the annual Lemon Festival around the first Sunday in August. Third Avenue from E Street to Roosevelt will be transformed into a fun-filled festival with activities and attractions for children and adults alike. Lemon Festival celebrates Chula Vista's heritage as the "Lemon capital of the world" and features live entertainment on 3 stages, hand crafters, international foods, contests and lemons galore.

Village Vibes Concert Series

Visit Chula Vista Memorial Park Bowl this summer, where you will enjoy free six open-air concerts varying from blues to salsa rhythms. Dance

to various music vibes at the Village Vibes Concert Series. All concerts are free! Just bring your lawn chair, blanket or mat, and get ready to spend your summer Wednesday nights with the companionship of you friends and family. Enjoy a different concert every week, dance and sway the night away with good Village Vibes. Wednesdays in July and August. *Please check our website for specific dates!*

Taste of Third Avenue & Art Walk

Take a self-guided walking tour of Third Avenue Village restaurants with art exhibits. You will get a chance to taste a variety of cuisines that will add flavor to your appetite. From Italian to Japanese food, take a stroll and find your next favorite restaurant and discover with your family and friends the many delights Chula Vista's Third Avenue Village carries. Fall.

Pet Fest & Doggy Dash

A fun-filled event for pets and pet lovers! The event will feature a 1.5-mile Doggy Dash, entertainment, pet-related activities, obedience demonstrations, pet adoptions and more. Mid-June.

Blast From the Past Car Show

Plenty of classic cars and motorcycles are on display along Third Avenue in downtown Chula Vista. Summers. *Please check our website for specific dates!*

Starlight Parade

This annual event is the largest nighttime parade in the South County, with over 5,000 participants

each year. Special features will include carolers, delightfully decorated floats, local school marching bands, and, of course, Santa Claus! The new parade theme this year is "A Storybook Holiday". Entries will be decorated in accordance with participant's favorite childhood holiday stories and fables! Early December.

Chula Vista Nature Center

For additional information about the following events or specific dates, please call (619) 409-5900 or visit www.chulavistanaturecenter.com

Where the Wild Things Are Food & Wine Classic

Enjoy wine and food from world-class wineries and restaurants at the Chula Vista Nature Center in mid-May! Interact with wildlife and experience the fresh air in the great outdoors for this classy evening event. Partake in exciting live and silent auctions, listen to live music by local artists, and learn a few tips and tricks from celebrity chef demonstrations. Must be 21 to attend.

Critters & Cocktails

Unwind after work with cocktails and appetizers, friends...and a few feathers and fins! Mingle with people and animals, learn about our native wildlife, and have a relaxing evening at the Chula Vista Nature Center! Quarterly event; check the Nature Center's calendar online for dates or give them a call! Must be 21 to attend.

POKER

Village Club

CARD ROOM

WWW.VCCARDROOM.COM

21ST CENTURY BLACK JACK

PAI GOW POKER

EZ BACCARAT

TEXAS HOLD'EM

429 BROADWAY
CHULA VISTA, CA 91910

PAI GOW ROOM PHONE #: 619.427-6073
POKER ROOM PHONE # 619.425.3333

Please gamble responsibly. If you have a gambling problem, call for help 1-800-GAMBLER or visit: www.problemgambling.ca.gov